

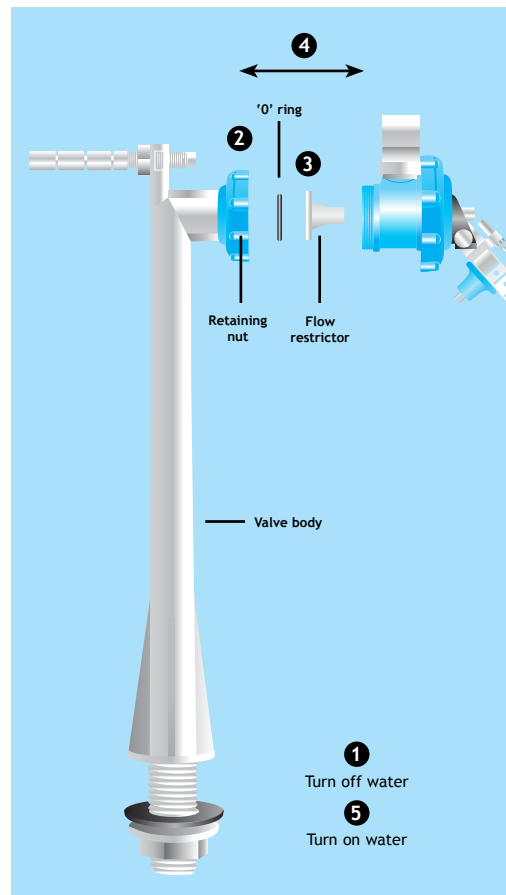
STAGE 3

Maintenance of filling valve

Cleaning

The procedure for cleaning the valve is as follows:

- 1 Turn off water.
- 2 Unscrew retaining nut.
- 3 Remove 'O' ring and flow restrictor and wash thoroughly.
- 4 Assemble parts in reverse order as above.
- 5 Turn on water supply.



Restrictors and water pressures

The Delchem valve as supplied is fitted with high pressure restrictor seat as standard (white). The valve is also accompanied by a low pressure restrictor seat (red) attached to float arm. The high pressure (white) seat is intended for use with water pressures from a minimum of 3 bars a maximum of 14 bar and the low pressure (red) seat is intended for use with water pressure of 3 bar and below.

Warning: Solder flux and some sealing compounds can damage this plastic plumbing product.

Opella Limited

Twyford Road, Rotherwas Industrial Estate, HEREFORD HR2 6JR, England.

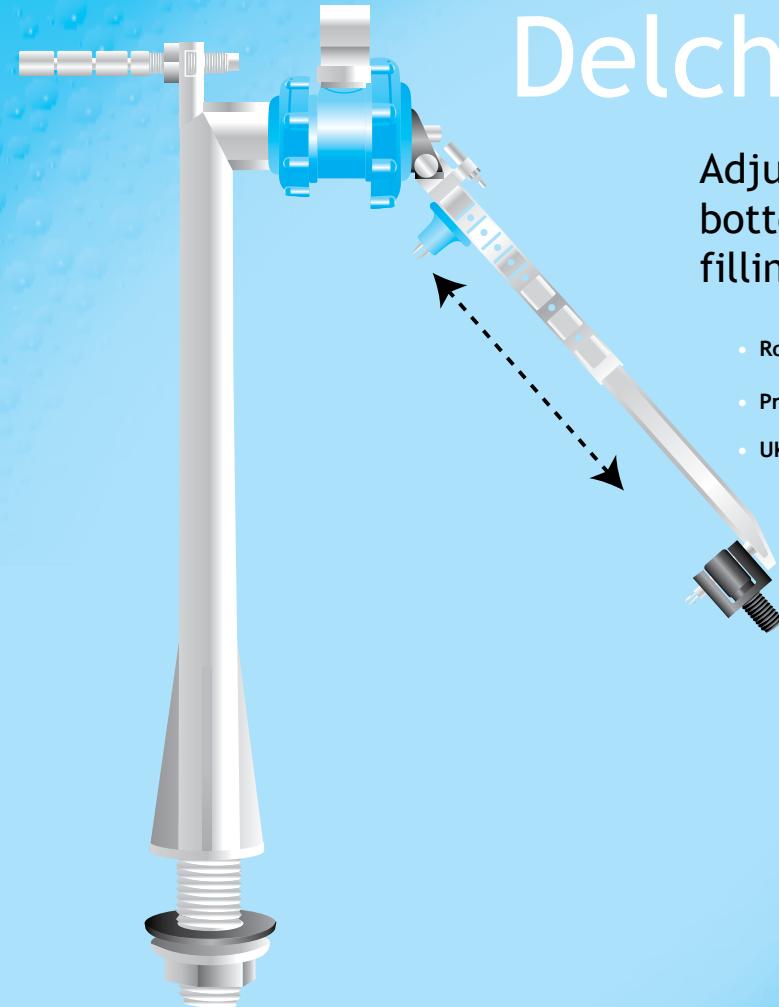
t: +44 (0) 1432 357331 f: +44 (0) 1432 264014 w: www.opella.co.uk e: sales@opella.co.uk

features • fitting instructions

Delchem[®]

Adjustable arm bottom entry filling valve

- Robust design
- Proven performance
- UK manufacturer



illustrations & artwork produced by - www.themakecreative.co.uk

LF00123

**MADE IN
THE U.K.**

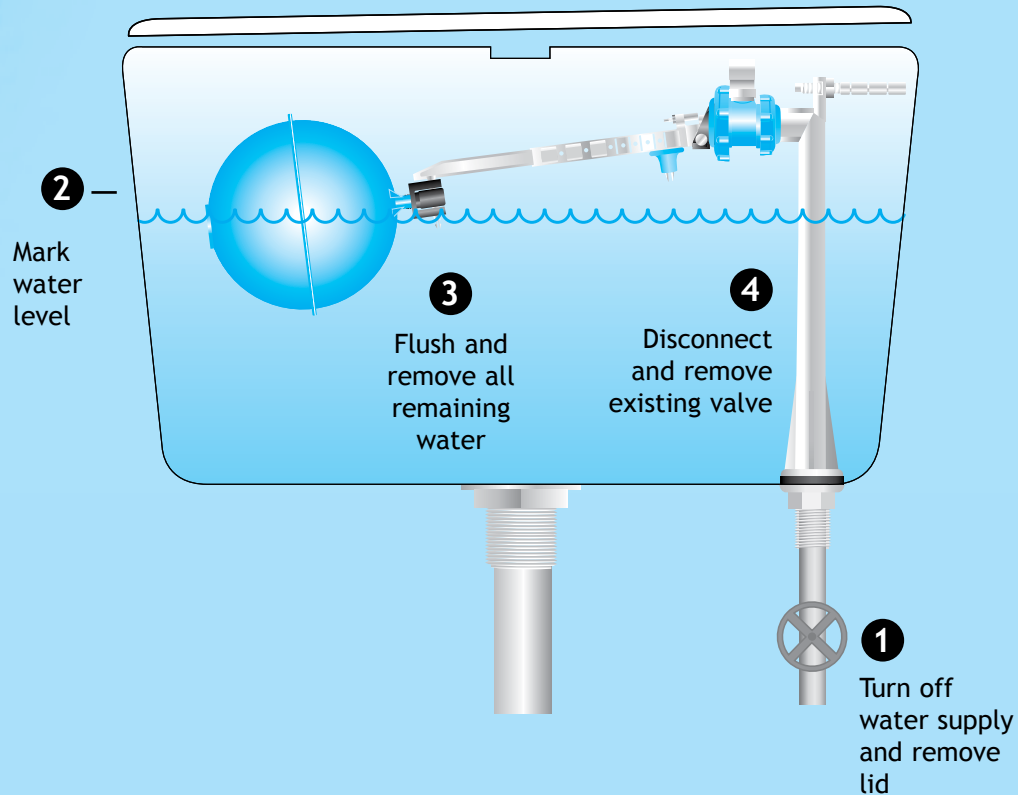
WRAS
APPROVED
PRODUCT

Opella
plumbing innovations

STAGE 1

Pre-installation

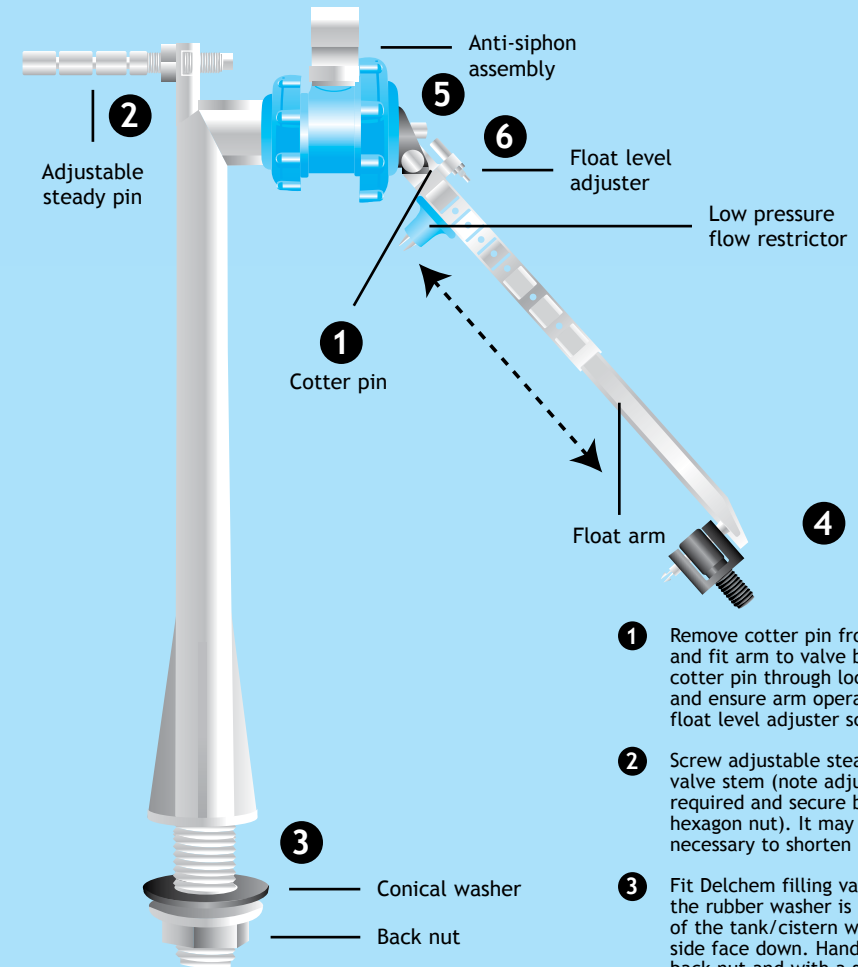
- 1 Turn off water supply to cistern and remove cistern lid.
- 2 While still full, mark the normal water level on the inside of the cistern.
- 3 Flush the cistern and remove all remaining water with a sponge or cloth. Ensure all dirt and loose particles are removed as they could impair the filling of the Delchem valve.
- 4 Disconnect and remove existing filling valve.



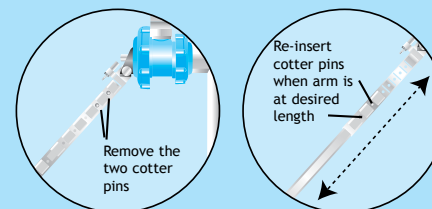
*Valve can be fitted on either side of cistern.

STAGE 2

Fitting your Opella Delchem® filling valve



Arm Adjustment



Remove the two cotter pins from their pre-set locations, extend arm to desired length. Line up holes in the two parts and re-insert the cotter pins to fix arms length.

- 1 Remove cotter pin from float arm and fit arm to valve body. Push cotter pin through locating holes and ensure arm operates plunger via float level adjuster screw.
- 2 Screw adjustable steady pin into valve stem (note adjust length as required and secure by tightening hexagon nut). It may also be necessary to shorten pin.
- 3 Fit Delchem filling valve ensuring the rubber washer is on the inside of the tank/cistern with the conical side face down. Hand tighten the back nut and with a spanner, tighten a further three-quarter turn. **DO NOT OVERTIGHTEN.**
- 4 Fit suitable ball float to end of float arm.
- 5 Check anti-siphon assembly is held securely by retaining nut.
- 6 Turn on water supply. Allow cistern or tank to fill. Adjust water level by rotating the float level adjuster screw. The screw operates the plunger which opens and closes the valve. When correct water height is achieved, lock the adjusting screw in position by tightening hexagonal nut.