

Servicing

To access the cistern, the front fascia must be carefully and gently pulled forward enough to enable you to get your hand onto the back nut for the button.

Unscrew the back nut all the way to the cable assembly then keep turning the nut to have the effect of the nut pushing off the cable mechanism. This prevents any danger of breaking the joining teeth.

Place the front fascia down being careful not to damage anything.

To access the drop valve the lid must be removed and the drop valve can be rotated off the bayonet style fitting and services. To re-fit this process must be reversed.

To remove the cistern from the furniture, firstly isolate the water supply. Flush all remaining water from cistern. Disconnect the water supply and then disconnect the flush pipe. Using a small stubby flat head screw driver push the clip at the back of the cistern towards the back wall and lift the cistern out of the locating lugs.

For more information
please contact
sales@opella.co.uk

Opella
plumbing innovations

Opella Limited
Twyford Road
Rotherwas Industrial Estate
HEREFORD HR2 6JR
England

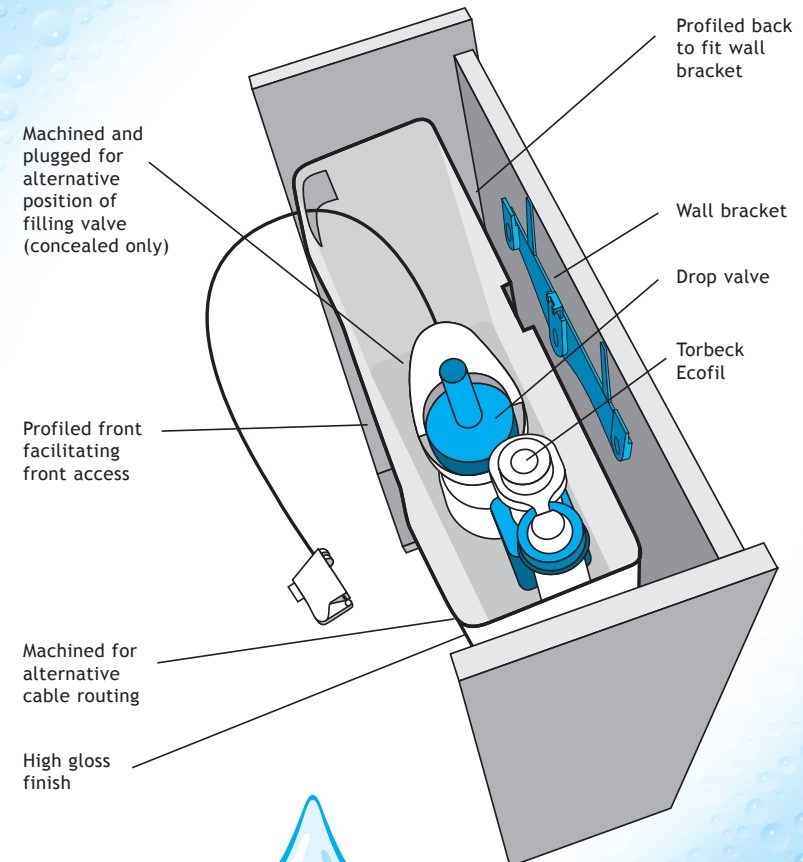
t: +44 (0) 1432 357331
f: +44 (0) 1432 264014
w: www.opella.co.uk
e: sales@opella.co.uk

Opella Limited pursue a policy of continuous product improvement and reserve the right to change the product specification at any time without prior warning. All details correct at time of going to print.

LF00090

features • fitting instructions

Opella Cistern Installation Instructions



WRAS
APPROVED
PRODUCT



MADE IN THE U.K.

Opella
plumbing innovations

Opella Cistern Installation Instructions

1 A. Concealed

Position and fix the cistern support bracket in the centre of the carcass ensuring the indicator tabs are both level with the top of back rail of the furniture unit (Figure A).

B. Exposed (not shown)

When installing the exposed cistern the tabs need to be cut off the bracket prior to fixing to the wall. Ensure the bracket is securely fixed in a horizontal position using the appropriate wall plugs for wall constraint.

Note: There are three holes for fixing the bracket to the wall. It is advised to draw a vertical line down the wall, in line with the centre of the pan flushing hole. Fix the first screw through the centre hole of the bracket on this line which will allow easy horizontal alignment and correct positioning. Ensure there is enough room for the flush bend to be fitted. Fix the bracket into its final horizontal position with the remaining two holes.

2 Fitting to bracket

When the bracket is fixed, the cistern can be secured to the furniture. Hold the cistern centrally aligning the bracket lugs with the recesses in the back face of the cistern. Gradually lower the cistern to engage the lugs and push down until the clip snaps into place. Only modest lateral movement should now be possible to assist with pan alignment. (Figure B)

3 The Castalia cistern comes with a pre-fitted filling valve and evacuation valve so that no further adjustment is necessary. All that is required is to make the appropriate connection to the water supply.

IMPORTANT: Ensure the water connection is made to the filling valve and not the blanking plug. Care should be taken to make sure the relevant flow restrictor is fitted according to the Torbeck instruction leaflet.

Note it is also advisable to install an appropriate service valve.

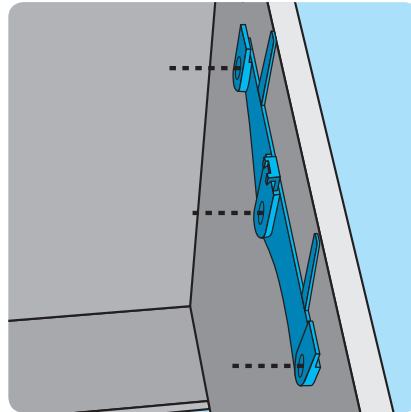


Figure A

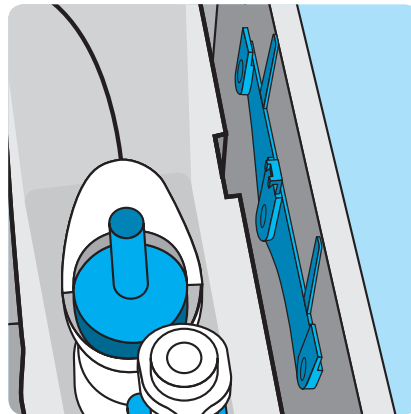


Figure B

4 Cut the flush pipe to the correct length, this should be long enough to go at least 25mm into the base of the drop valve thread sticking out of the bottom of the cistern. At this stage the coupling nut needs only to be hand tight. Connect the pan connector onto the remaining end of pipe. (You can use water as a lubricant to slide this on.)

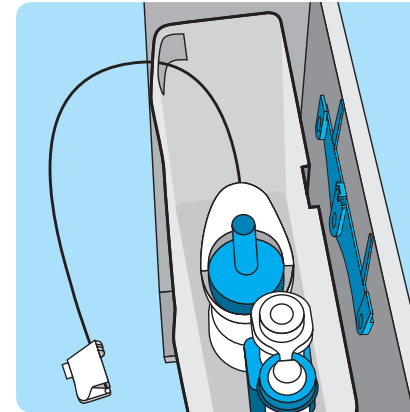


Figure C

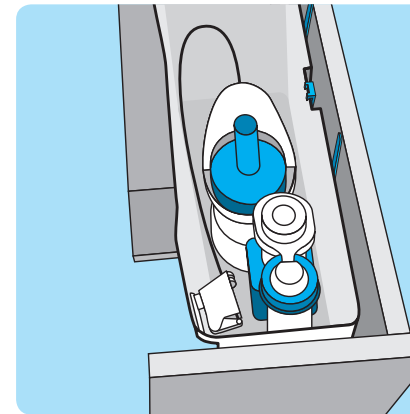


Figure D

5 Align the toilet pan flush hole to the pan connector on the flush bend and then insert pan connector into the flush hole so that the pan goes flush with the front of the carcass. Tighten the coupling nut on the drop valve thread to ensure a leak proof joint.

6 A. The drop valve cable must now be connected to the button assembly which should be fitted to the hole in the front facia. For furniture deeper than 300mm the cable end should be fed out of the left hand slot to the outside of the cistern and over the right hand side for button connection as per Figure C. For furniture less than 300mm deep, the cable should be inside the cistern and the cable end attached through the right hand slot as per Figure D.

B. For exposed system application the cable should be pre-fitted to the button assembly.

7 Fitting the push button assembly is very simple. The grab teeth on the end of the cable housing push over the round connection rod found at the end of the button thread. Once the button is fitted hand tight to the front facia, the button can be pushed into place. Confirmation will be an audible click when the button is correctly fitted.

Ensure the cable is routed through the correct slot before connecting the button. **Always support the facia when button is fitted. Do not hang the front facia or any heavy weight on the cable.**

8 Ensure cable sheath is pushed fully into connectors and the push button operates the drop valve correctly and does not resist operational performance before fitting the lid in place.

9 The front facia can now be fitted completing the assembly. Ensure the cable assembly moves with the back of the facia into the slots in the cistern on 300mm units.